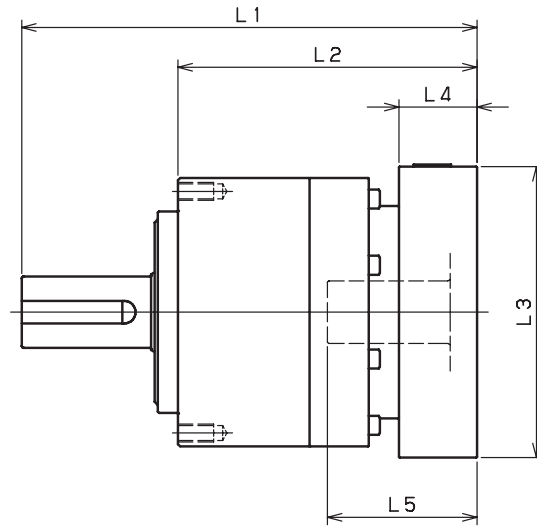


VRL-070 – 1-Stage Adapter Dimensions



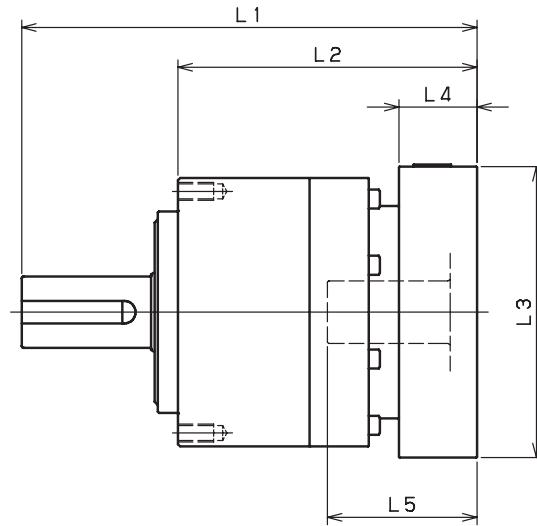
Model Number	** Adapter Code	1-Stage				
		L1	L2	L3	L4	L5
VRL-070B-□-□-8** (Input shaft bore $\leq \phi 8$)	AA·AC·AD·AF·AG	112	76	□52	15.5	32
	AB·AE·AH·AJ·AK	117	81	□52	20.5	37
	BA·BB·BD·BE	112	76	□60	15.5	32
	BC·BF	117	81	□60	20.5	37
	CA	117	81	□70	20.5	37
VRL-070B-□-□-14** (Input shaft bore $\leq \phi 14$)	BA·BB·BD·BE·BF·BG·BJ·BK	115	79	□65	16.5	35
	BC·BH·BM	120	84	□65	21.5	40
	BL	125	89	□65	26.5	45
	CA	115	79	□70	16.5	35
	CB	120	84	□70	21.5	40
	DA·DB·DC·DD·DF·DH	115	79	□80	16.5	35
	DE	120	84	□80	21.5	40
	DG	125	89	□80	26.5	45
	EA·EB·EC	115	79	□90	16.5	35
	ED	125	89	□90	26.5	45
	FA	115	79	□100	16.5	35
GA	115	79	□115	16.5	35	
VRL-070B-□-□-19** (Input shaft bore $\leq \phi 19$)	DA·DB·DC	130	94	□80	25	50
	DD	140	104	□80	35	60
	DE	135	99	□80	30	55
	EA	135	99	□90	30	55
	EB	130	94	□90	25	50
	EC	140	104	□90	35	60
	FA	130	94	□100	25	50
	FB	140	104	□100	35	60
	GA·GC	135	99	□115	30	55
	GB·GD	130	94	□115	25	50
	HA	130	94	□130	25	50
HB	145	109	□130	40	65	
HC·HD·HE	135	99	□130	30	55	

*1) Single reduction : 1/3~ 1/10

*2) Bushing will be inserted to adapt to motor shaft

For an explanation on the Adapter Flange Code, please turn to page 300

VRL-070 – 2-Stage Adapter Dimensions



Model Number	** Adapter Code	2-Stage				
		L1	L2	L3	L4	L5
VRL-070B-□-□-8** (Input shaft bore $\leq \phi 8$)	AA·AC·AD·AF·AG	131	95	□52	15.5	32
	AB·AE·AH·AJ·AK	136	100	□52	20.5	37
	BA·BB·BD·BE	131	95	□60	15.5	32
	BC·BF	136	100	□60	20.5	37
	CA	136	100	□70	20.5	37
VRL-070B-□-□-14** (Input shaft bore $\leq \phi 14$)	BA·BB·BD·BE·BF·BG·BJ·BK	136	100	□65	16.5	35
	BC·BH·BM	141	105	□65	21.5	40
	BL	146	110	□65	26.5	45
	CA	136	100	□70	16.5	35
	CB	141	105	□70	21.5	40
	DA·DB·DC·DD·DF·DH	136	100	□80	16.5	35
	DE	141	105	□80	21.5	40
	DG	146	110	□80	26.5	45
	EA·EB·EC	136	100	□90	16.5	35
	ED	146	110	□90	26.5	45
	FA	136	100	□100	16.5	35
	GA	136	100	□115	16.5	35
VRL-070B-□-□-19** (Input shaft bore $\leq \phi 19$)	DA·DB·DC	--	--	--	--	--
	DD	--	--	--	--	--
	DE	--	--	--	--	--
	EA	--	--	--	--	--
	EB	--	--	--	--	--
	EC	--	--	--	--	--
	FA	--	--	--	--	--
	FB	--	--	--	--	--
	GA·GC	--	--	--	--	--
	GB·GD	--	--	--	--	--
	HA	--	--	--	--	--
HB	--	--	--	--	--	
HC·HD·HE	--	--	--	--	--	

*1) Double reduction : 1/15~ 1/100

*2) Bushing will be inserted to adapt to motor shaft

For an explanation on the Adapter Flange Code, please turn to page 300