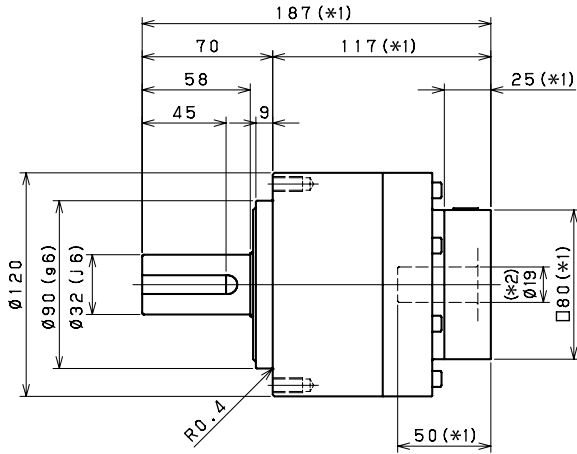
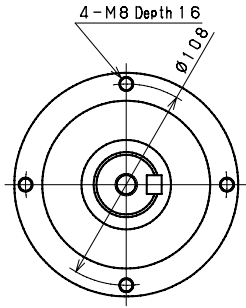


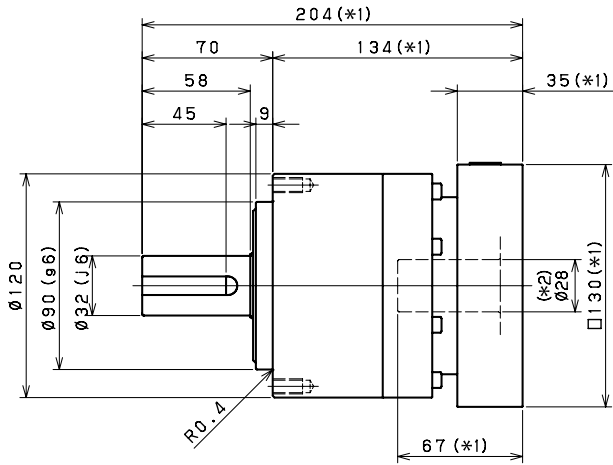
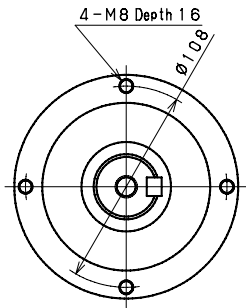
# VRL SERIES Inline Planetary

## VRL 120 1-Stage Dimensions

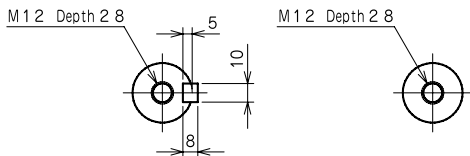
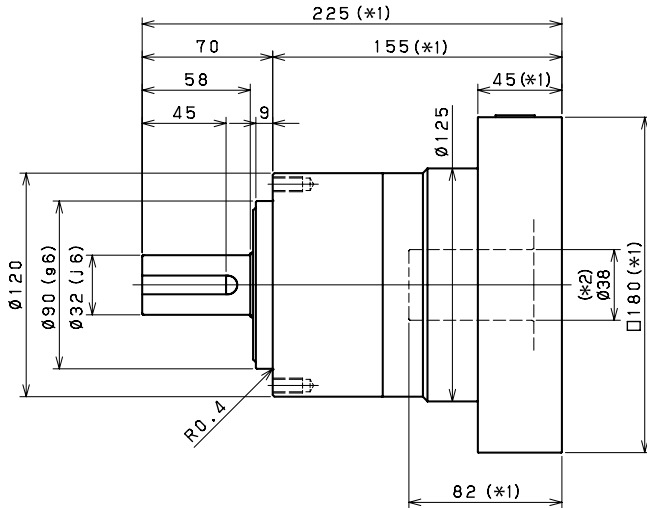
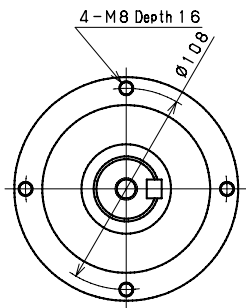
Input bore size  $\leq \varnothing 19$  mm



Input bore size  $\leq \varnothing 28$  mm



Input bore size  $\leq \varnothing 38$  mm



Keyed shaft

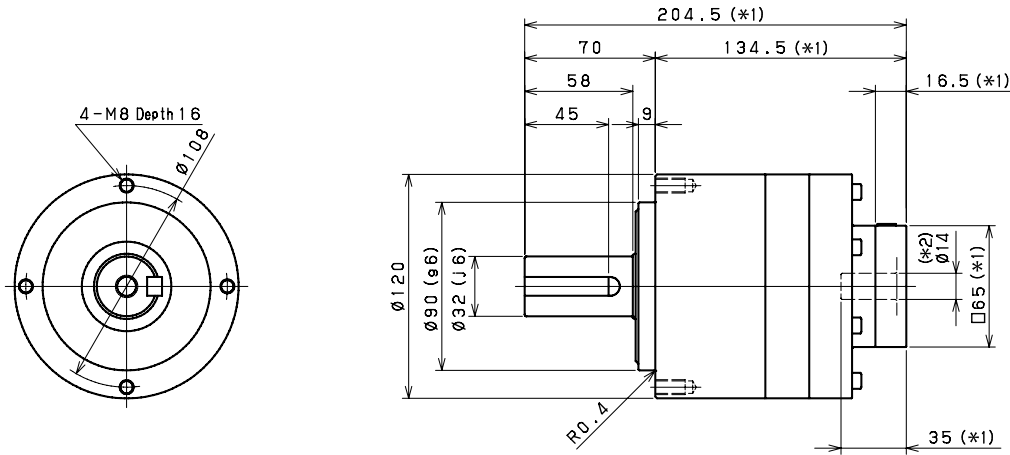
Smooth shaft

\*1) Length will vary depending on motor

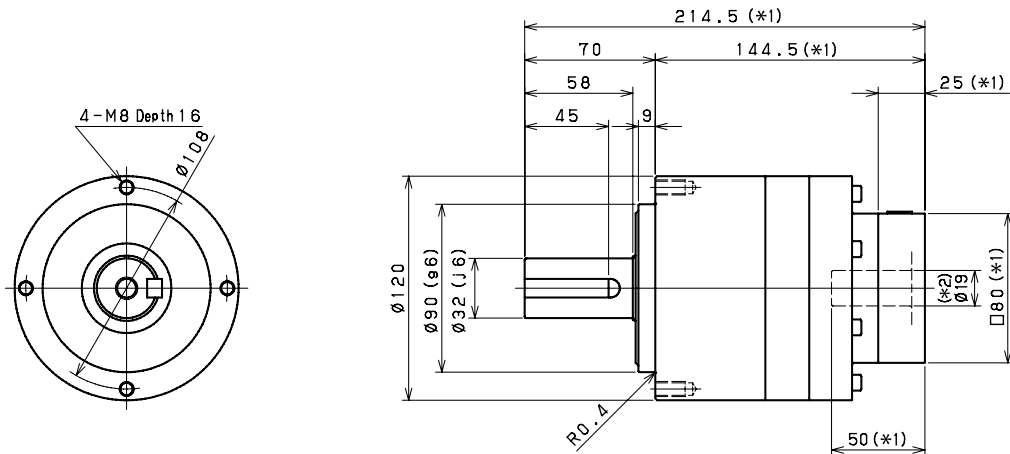
\*2) Bushing will be inserted to adapt to motor shaft

## VRL 120 2-Stage Dimensions

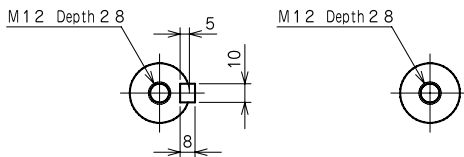
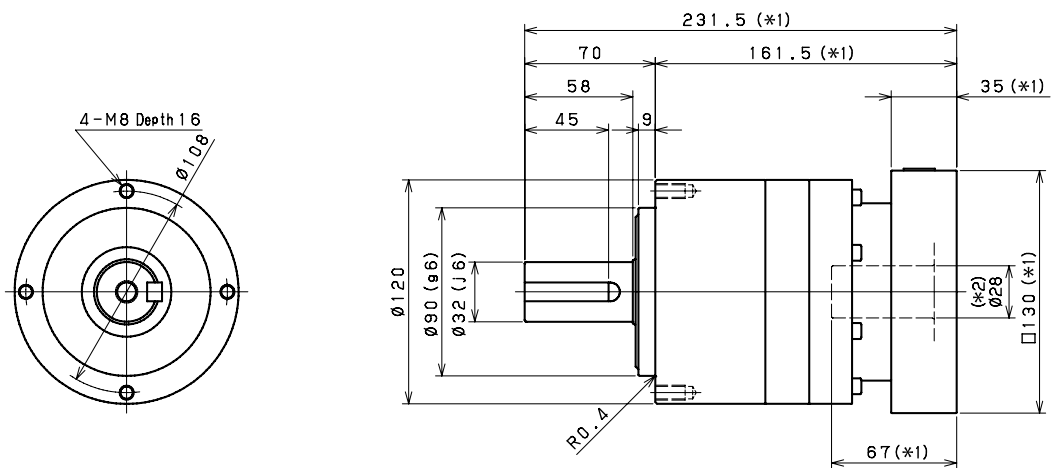
Input bore size  $\leq \varnothing 14$  mm



Input bore size  $\leq \varnothing 19$  mm



Input bore size  $\leq \varnothing 28$  mm <sup>(\*)3</sup>



Keyed shaft

Smooth shaft

\*1) Length will vary depending on motor

\*2) Bushing will be inserted to adapt to motor shaft

\*3) 38mm input bore is available for this frame size. Use our online configurator to make your selection or contact us for assistance